



Trossachs Drive | Bathwick | Bath | BA2 6RP

£4,000 Per month



Trossachs Drive | Bathwick

Bath | BA2 6RP

£4,000 Per month

EPC Band: D | Council Tax Band: G

Undergoing refurbishment- This fine Standing 5 bedroom family home located on the outskirts of the city in elevated position with fantastic views across the city. Available end of August early September.

This delightful 5 bedroom detached property offers so much if you are looking for a larger family home close to both Bathwick St Marys Primary school, King Edward school and Bath city centre.

The property has had a total refurbishment to include new kitchen, bathrooms carpets and décor.

The accommodation offers well balanced light and airy rooms with the most fantastic vista over the city.

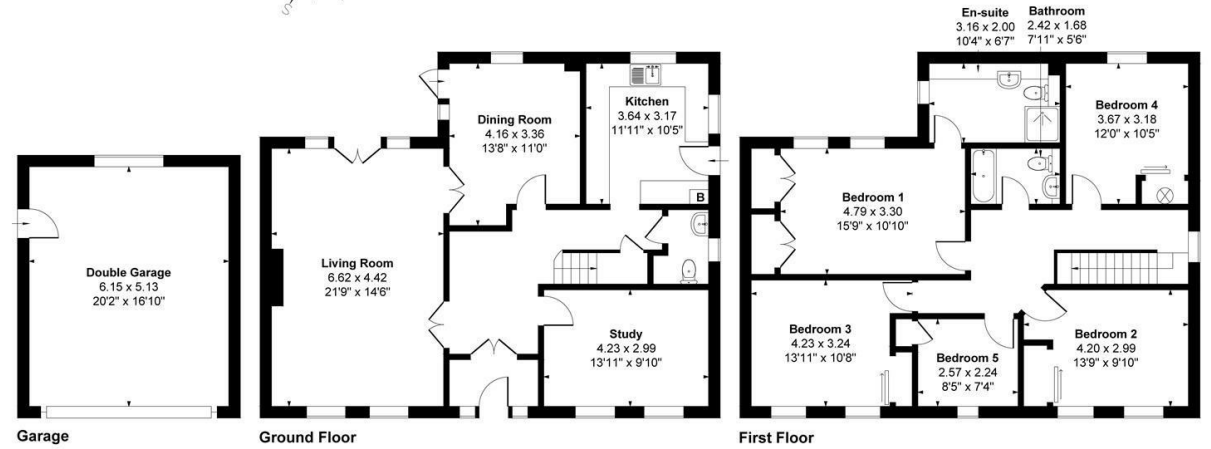




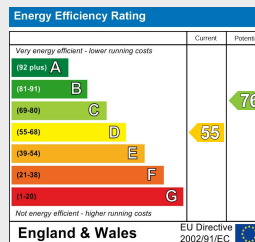


5 Trossachs Drive, Bathwick, Bath, BA2 6RP

Approximate Gross Internal Area
Total = 210 sq m (2254 sq ft)
Main House = 178 sq m (1914 sq ft)
Garage = 32 sq m (340 sq ft)



© Meyer Energy Ltd 2025. Drawn to RICS guidelines. Not drawn to scale.
Plan is for illustration purposes only. All features, door openings, and window locations are approximate.
All measurements and areas are approximate and should not be relied on as a statement of fact.



30 Charles Street
Bath
BA1 1HU
01225 447 440

bath@propertylinkstates.com
propertylinkstates.com