



Bathwick Hill | Bathwick | Bath | BA2 6HA

£10,500 Per month





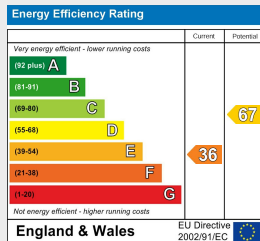
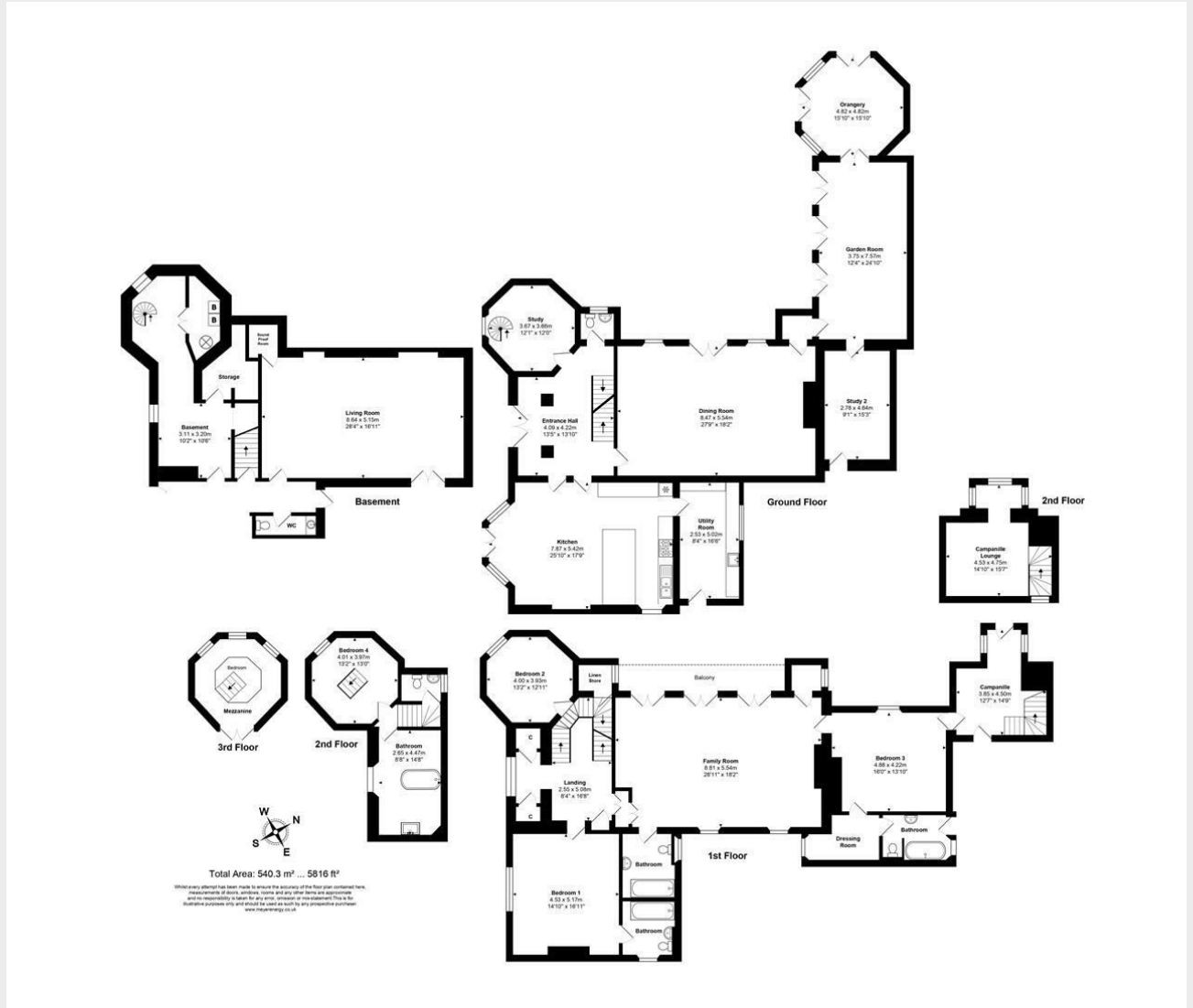
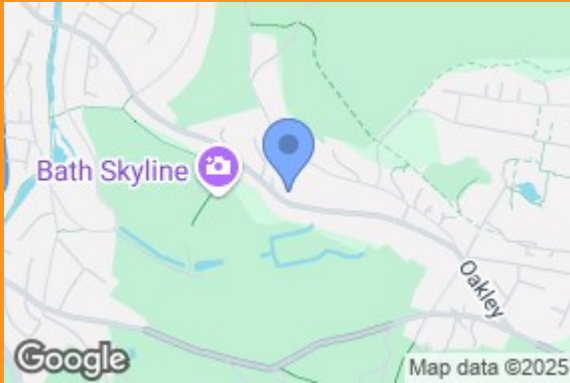
Bathwick Hill | Bathwick  
Bath | BA2 6HA  
£10,500 Per month  
EPC Band: F | Council Tax Band: H

Bathwick Grange, formally known as "Montebello", is one of Bath's architectural gems. Built around 1830 this early Victorian villa is located on Bathwick Hill with views across Bath's skyline. Designed by the renowned Bath architect Henry Goodridge, it was his personal home until 1848. This multi-level villa is built in the Italianate style, influenced by Goodridge's grand European tour and is one of the most picturesque of Bath's villas with its Tuscan belvedere, octagonal tower, orangery (reinstated c2000 ) loggia, veranda, balustrades, terraces and wooded grounds. The accommodation comprises a welcoming entrance hall with its impressive stone cantilevered staircase accessing both the lower floor and upper floors, a true centre piece of early Victorian elegance. The large kitchen/ dining area offers excellent workspace with an informal dining area and a useful utility room all with garden access. The library on the ground floor of the octagonal tower is a masterpiece of architectural design, showcasing its beautiful ornate hand-painted ceiling. The impressive reception room includes many original features including working shutters, an open fireplace and access to the patio and veranda. The double-volume octagonal orangery contains an elaborate plasterwork ceiling and the attached morning room has access to the patio and veranda. The Red Room snug has access to the rear pathway and gardens. The first floor accommodates the master suite accessing an additional bedroom with en-suite and the belvedere tower bedroom and offices. Off the main landing is a further large bedroom with en-suite overlooking the gardens. Two further bedrooms are in the octagonal tower, the upper bedroom giving access via iron stairs to a cantilevered library above, along with a further bathroom and separate wc. On the lower ground level there is a large gym/leisure room and a separate wc.









30 Charles Street  
Bath  
BA1 1HU  
01225 447 440  
bath@propertylinkstates.com  
propertylinkstates.com